



Funded by the
Erasmus+ Programme
of the European Union

Cyber-Attacks: Social Engineering and Phishing

Introduction to Cyber-Attacks

Safeguarding against Phishing in the age of 4th Industrial Revolution

www.cyberphish.eu

This project has been funded with support from the European Commission.

This publication [communication] reflects the views only of the author, and the Commission cannot be held responsible for any use which may be made of the information contained therein.



Learning Goals



Explain what is cyber-attack
in particular what is phishing
attack

Student Workload



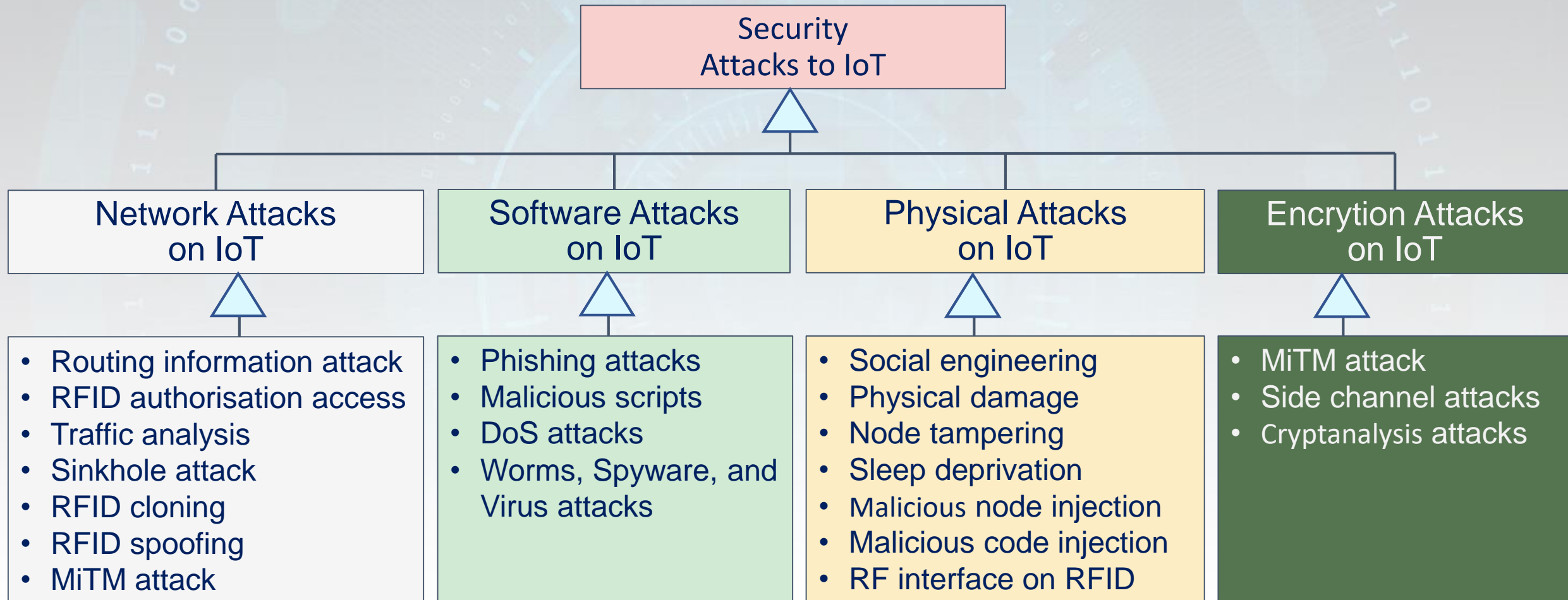
Lecture	0,5 h
Audio and video material	0,5 h
Case studies	0,5 h
Further reading	1 h
Preparation for exam	0,5 h

Contents

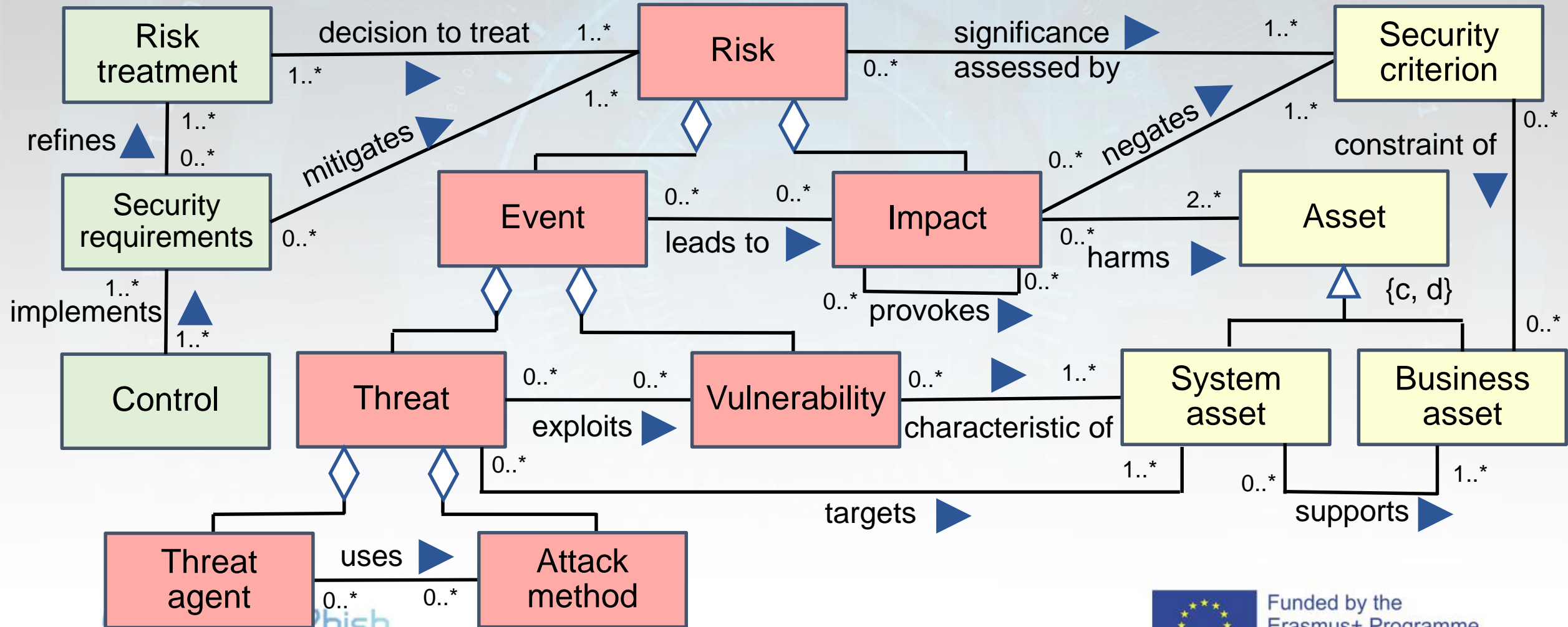
- What are security threats and risk?
- What is phishing attack?
- Phisher's profile and attack means
- Phishing attack process
- Causes of the phishing attacks



Security Threats/ Attacks



What is a Security Risk?



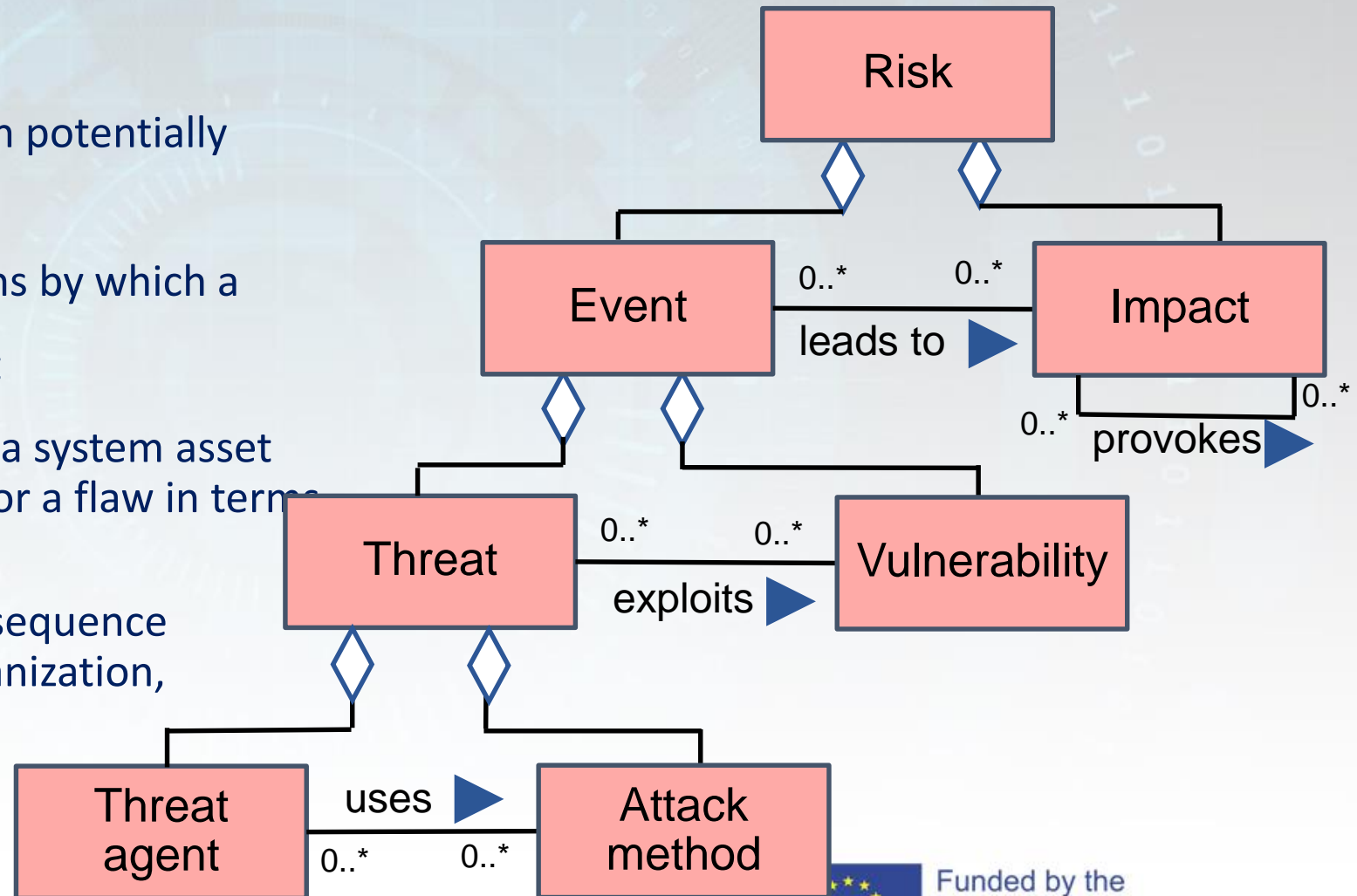
[Dubois at al., 2010]



Funded by the
Erasmus+ Programme
of the European Union

What is a Security Risk?

- **Threat agent** – an agent that can potentially cause harm to system assets
- **Attack method** – standard means by which a threat agent carries out a threat
- **Vulnerability** – characteristic of a system asset that can constitute a weakness or a flaw in terms of system security
- **Impact** - potential negative consequence that may harm assets or an organization, when a threat is accomplished



[Dubois at al., 2010]

What is a Phishing Attack?

Phishing is a social engineering scam that can result in data loss, reputational damage, identity theft, the loss of money, and many other damages to peoples and organisations. A phishing scam usually starts with an email trying to gain the potential victim's trust and convince them to take the attacker's desired actions

[Abroshan, 2021]

Phishing is a socio-technical attack, in which the attacker targets specific valuables by exploiting an existing vulnerability to pass a specific threat via a selected medium into the victim's system, utilizing social engineering tricks or some other techniques to convince the victim into taking a specific action that causes various types of damages

[Alkhalil et al., 2021]

What is a Phishing Attack?

Threat agent

Attack method

Vulnerability

Impact

Phishing is a social engineering scam that can result in data loss, reputational damage, identity theft, the loss of money, and many other damages to peoples and organisations. A phishing scam usually starts with an email trying to gain the potential **victim's trust** and convince them to take the attacker's desired actions

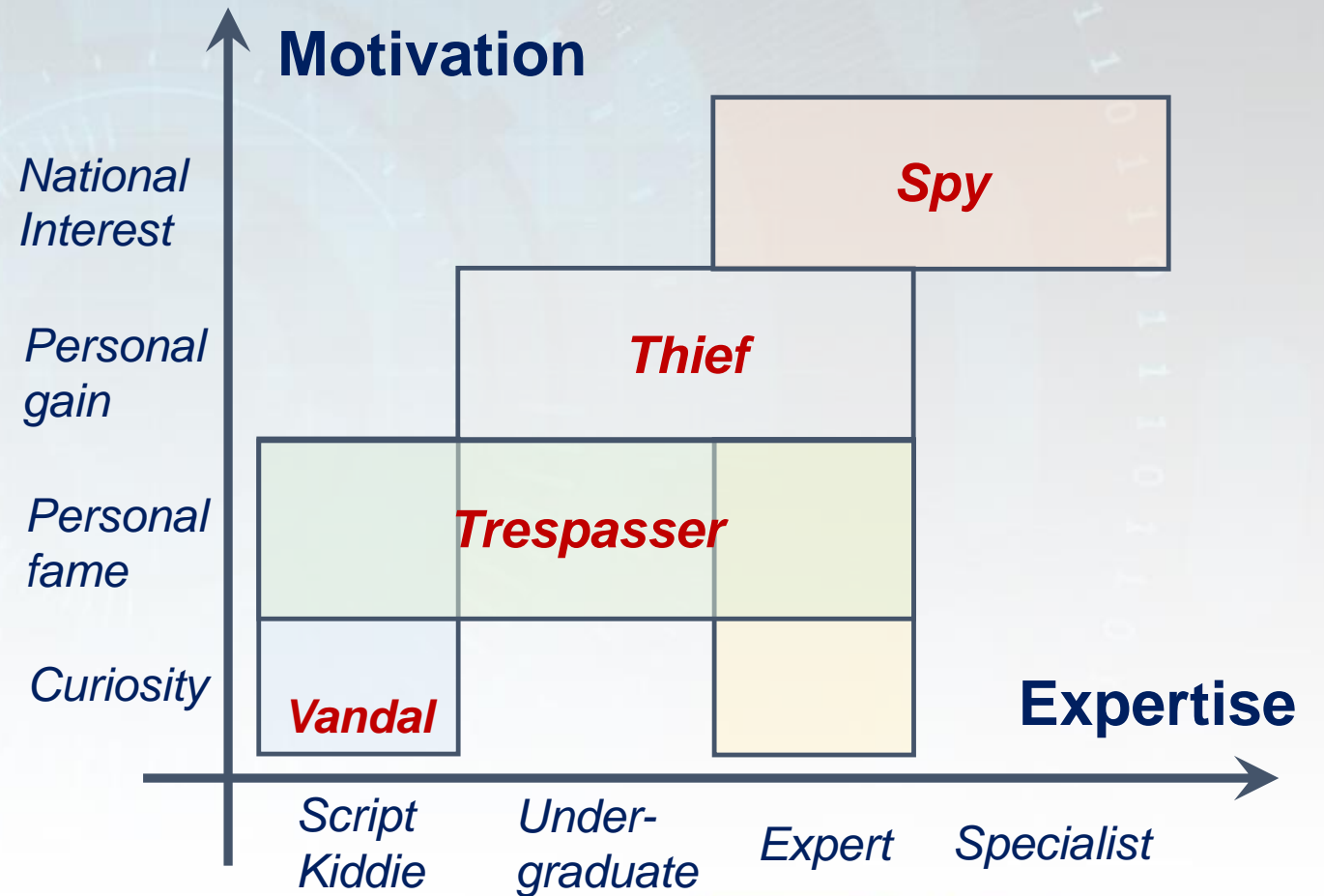
[Abroshan, 2021]

Phishing is a socio-technical attack, in which the **attacker targets specific valuables by exploiting an existing vulnerability to pass a specific threat via a selected medium into the victim's system, utilizing social engineering tricks or some other techniques to convince the victim into taking a specific action that causes various types of damages**

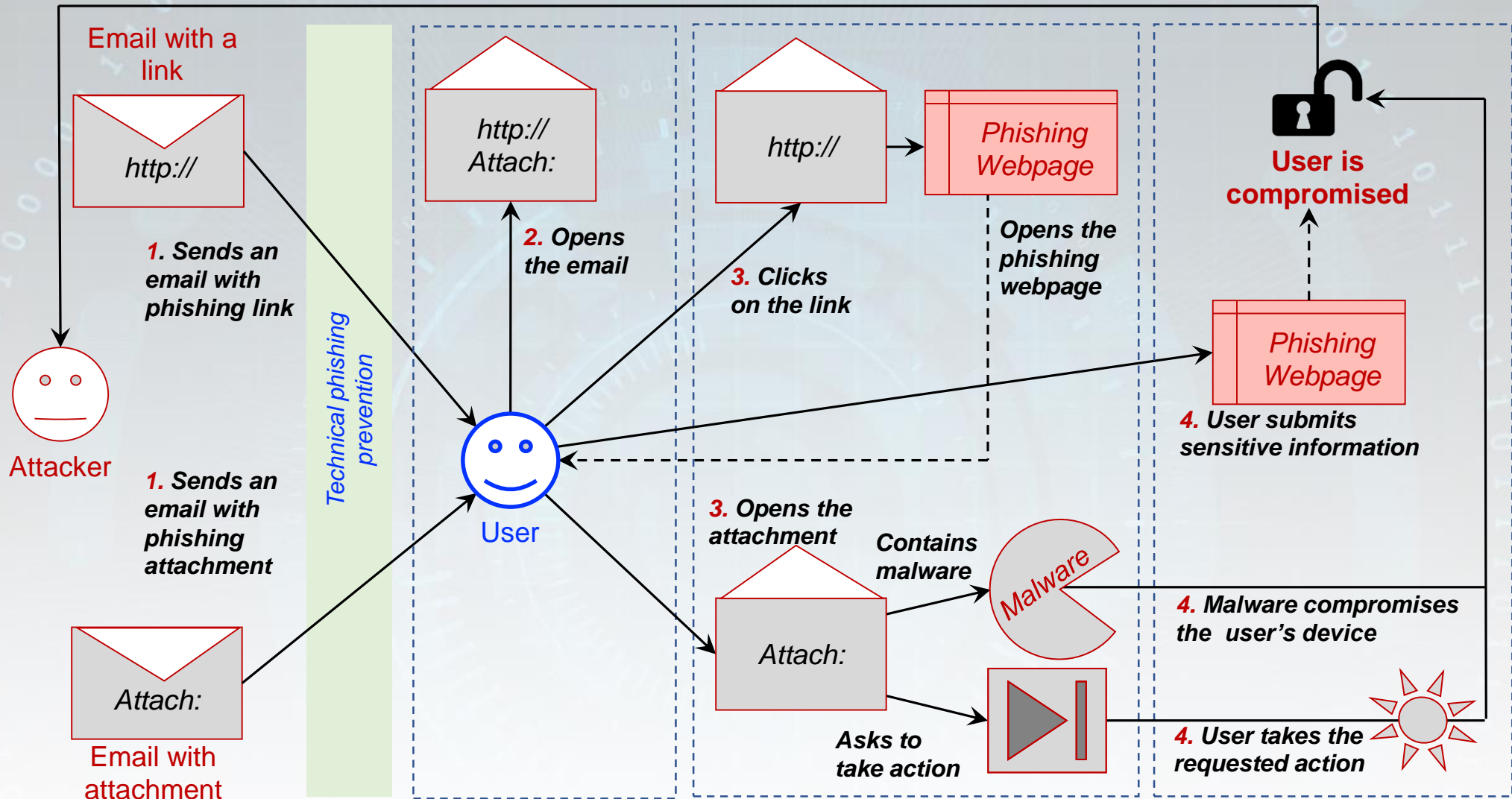
[Alkhalil et al., 2021]

Phisher's Profile

- **Opportunity**
 - *Time to perform a successful attack*
- **Capability**
 - *Hardware*
 - *Software*
 - *Database*
 - *Communication*



Phishing Attack Process

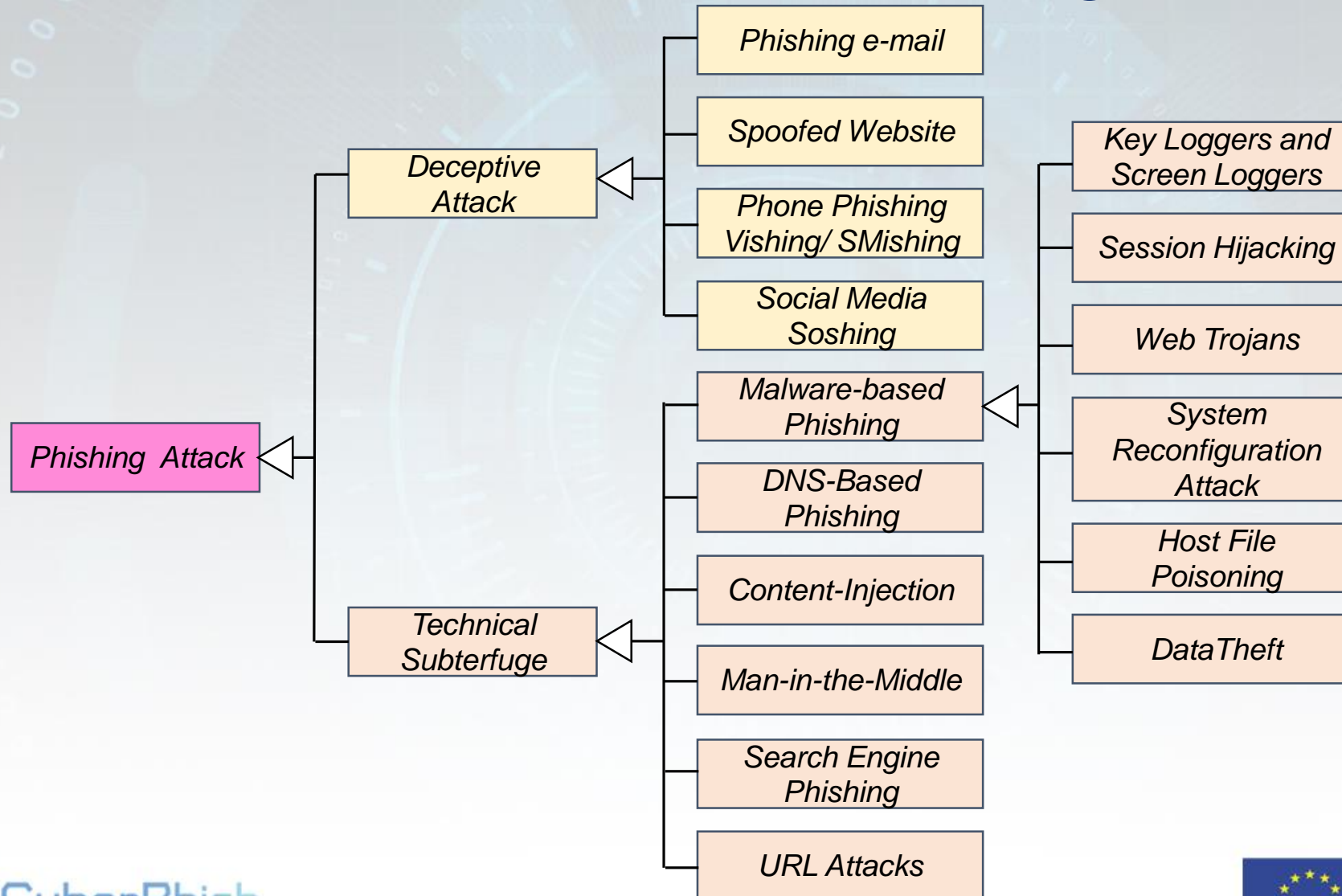


User opens the phishing email

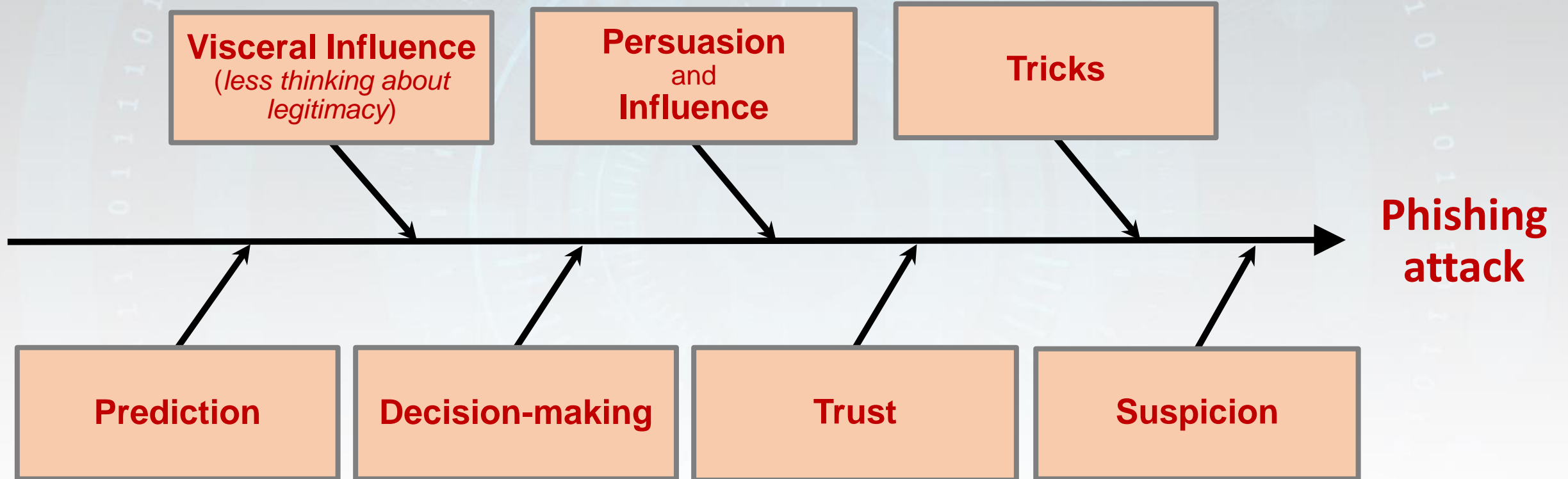
User clicks on the link

User submits sensitive information

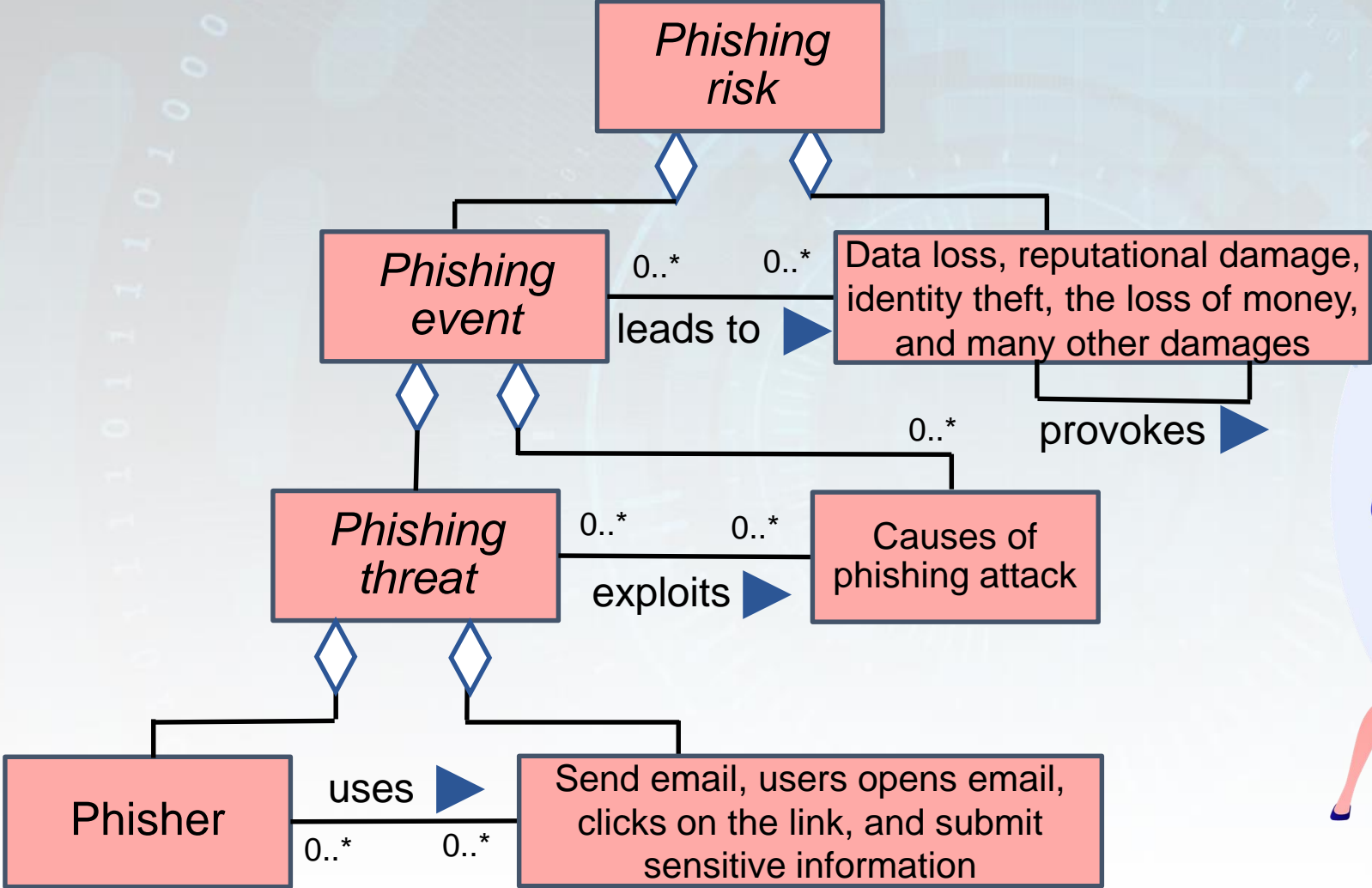
Phishing Attack Means



Phishing Attack Root Causes



Summary



Assignments

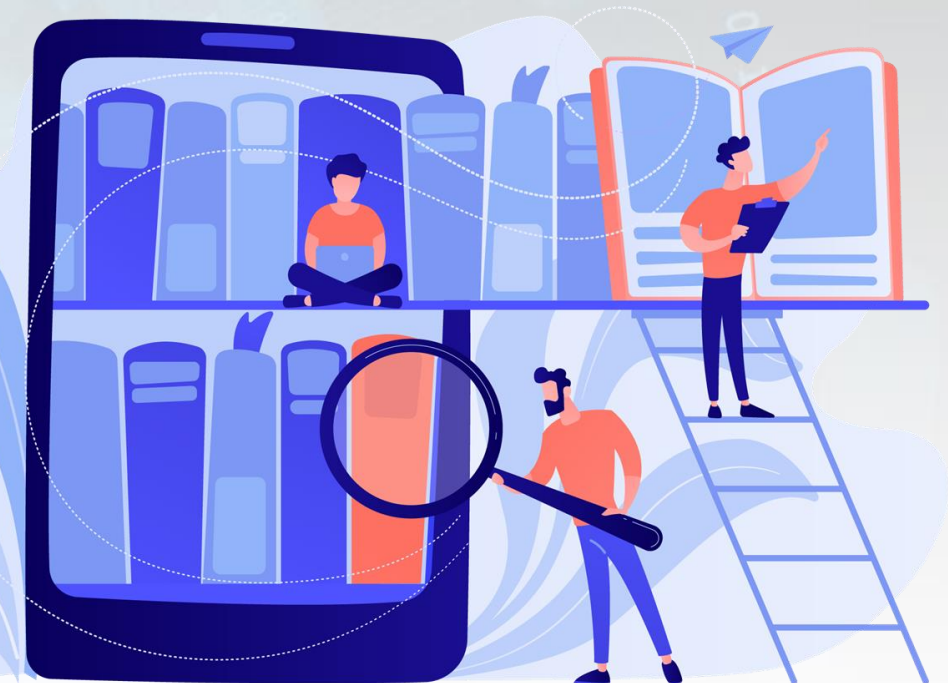


- Discuss what are the dependencies between the phishing attacks and other cybersecurity attacks
- Discuss what are the causes of the Phishing attacks

Further Reading

Material used in preparation of this lecture

- **Abroshan, H., Devos, J., Poels, G., Laermans, E.** (2017) Phishing Attacks Root Causes. *LNCS 10694*, pp. 187-202, Springer
- **Abroshan, H., Devos, J., Poels, G., Laermans, E.** (2021) Phishing Happens Beyond Technology: The Effects of Human Behaviours and Demographics on Each Step of a Phishing Process. *IEEE Access*, 9, 44928- 44949.
- **Alkhalil Z., Hewage C., Nawaf L., Khan I.** (2021) Phishing Attacks: A Recent Comprehensive Study and a New Anatomy, *Front. Comput. Sci.*, 09 March 2021
- **Dubois E., Heymans P., Mayer N., Matulevičius R.** (2010) A Systematic Approach to Define the Domain of Information System Security Risk Management. *Intentional Perspectives on Information Systems Engineering 2010*: 289-306
- **Iqbal M., Matulevičius R.** (2019) Blockchain-Based Application Security Risks: A Systematic Literature Review. *CAiSE Workshops 2019*: 176-188
- **ben Othmane, L., Ranchal, R., Fernando, R., Bhargava, B., Boddien, E.:** (2014) Incorporating attacker capabilities in risk estimation and mitigation. *Comput. Secur.* 51, 41–61
- **Shostack, A.** (2014) Threat Modeling: Design for Security, *Wiley, New York*



Short Videos

- Common Cybersecurity Threats
 - <https://youtu.be/Dk-ZqQ-bfy4>
 - <https://youtu.be/Gl6LohArXFk>
- What is phishing?
 - <https://youtu.be/Y7zNIEMDml4>
 - <https://youtu.be/9TRR6IHviQc>
- Common types of phishing attacks
 - <https://youtu.be/Q2HzEUEhRT0>
 - <https://youtu.be/rb26NK0jtHM>



Thank you!

